

Name Pixel KNX

Ref

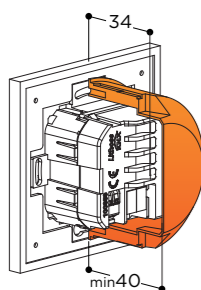
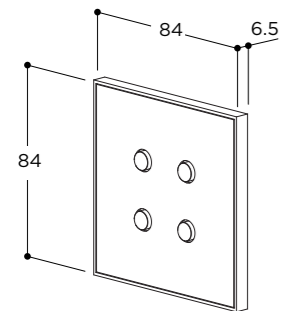


PRODUCT MODULE (MAX 4 MODULES) COLOR

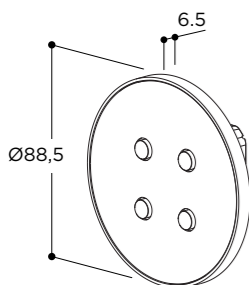
EXAMPLE CODE PXSVR101: Pixel 1PR KNX Stainless Steel

Product	Code
Pixel	PX
Circum Pixel***	CP
Module	Code
KNX 1PR	SVR1
KNX 2PR	SVR2
KNX 4PR	SVR4
Color	Code
Stainless Steel	01
Matt White RAL9010	02
Gunpowder Black	03
Brushed Brass	06
Chrome	08
Nickel	09
Textured White RAL9010	13
Textured Black	14
Bronze Antique	17
Matt Black	18
Tin Antique	19
Brass Antique	20
Copper	29
Anodic Bronze	44
Anodic Brown	45

Temperature probes (optional)	Code	Type	Range
ACC003		Type A	(-20°/+100°C)
ACC004		Type B	(-50°/+60°)
Specifications	Max. power consumption	4mA	
Regulatory compliance EMC directive. Standards EN50428, EN50491			



**A depth of 65mm is recommended to easily manipulate the cables

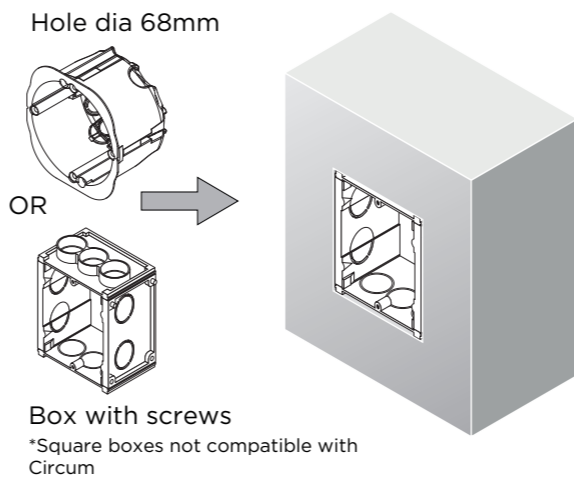


***Dimensions voor Lithoss Circum

- NL Installatie- en onderhoudsrichtlijnen met betrekking tot de fabrieksgarantie**
- De plaatsing, de aansluiting en het uittesten van dit toestel dient steeds te gebeuren door een erkend elektro-installateur.
 - Dit toestel moet geïnstalleerd, verbonden en getest worden volgens de nationaal geldende reglementen op de elektrische installaties.
 - Deze technische bijsluiting dient te worden beschouwd als een onderdeel van de algemene verkoopvoorwaarden van Lithoss nv/sa.
 - De elektro-installateur is verantwoordelijk voor het gebruik van compatibele apparaten die voldoen aan de geldende CE en IEC normen.
 - Gebruik steeds de 'tool' voor het verwijderen van de 'Cover Plate' (afdekplaat).
 - Reinig het toestel enkel met een zachte en licht vochtige doek zonder reinigingsmiddel.
 - Leg altijd eerst de electriciteit af alvorens te plaatsen en installeren!
- FR Instructions d'installations et d'entretien à respecter vis-à-vis de la garantie d'usine.**
- Le placement, le raccordement et l'essai de cet appareil doivent toujours être effectués par un électricien / installateur agréé.
 - Cet appareil doit être installé, branché et testé suivant le règlement national sur les installations électriques en vigueur.
 - Ce manuel d'installation technique représente une partie des conditions générales de vente de Lithoss nv/sa.
 - L'installateur est responsable pour l'usage des produits compatibles, qui sont conformes aux normes CE et IEC en vigueur.
 - Utilisez toujours le 'tool' pour l'écartement du 'Cover Plate' (plaque de couvercle).
 - Nettoyez l'appareil uniquement avec un chiffon doux et légèrement humide sans détergent.
 - Toujours débrancher l'électricité AVANT d'installer!
- EN Installation and maintenance instructions associated to the manufacturer's warranty.**
- The installation, connection and testing of this device should always be performed by a recognized electrician / installer.
 - This device needs to be installed, connected and tested according to the official national instruction guide for electrical installations.
 - This technical manual is to be considered as an additional term to the general sales conditions of Lithoss nv/sa.
 - The installer is responsible for the use of compatible products which meet the CE and IEC rules.
 - Always use the 'tool' for the removal of the 'Cover plate'.
 - Clean the device only with a soft and slightly wet piece of cloth without any detergent.
 - Always switch off the electricity BEFORE installation!
- DE Montage und Unterhalt Instruktionen zu beachten mit Bezug auf der Fabrikgarantie.**
- Die Montage, der Anschluß und das Austesten des Gerätes soll immer von einem zertifizierten elektro-Installateur ausgeführt werden.
 - Das Gerät muß installiert, angeschlossen und getestet werden nach der allgemeinen nationalen Richtlinien über die elektrische Installationen.
 - Diese technische Gebrauchsanweisung gehört zu den allgemeinen Verkaufsbedingungen von Lithoss nv/sa.
 - Der elektro-Installateur ist verantwortlich für das Verwenden von CE und IEC kompatible Produkte.
 - Benutzen Sie immer das 'tool' für den Abbau der 'Cover Plate' (Deckplatte).
 - Das Gerät nur reinigen mit einem zarten und leicht feuchten Lappen ohne Reinigungsmittel.
 - Immer die Elektrizität ausschalten bevor Installation!

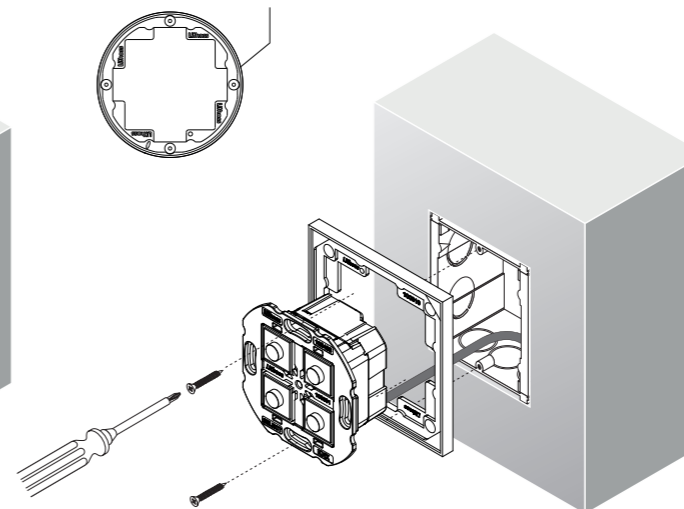
Installation

1 RECESSED WALL BOX INSTALLATION



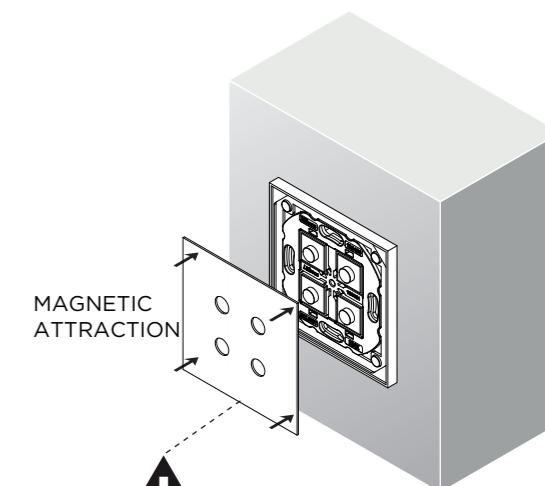
2 FIX FRAME TO WALL OR JUNCTION BOX WITH 2 SCREWS (USE HOLES ON VERTICAL AXIS)

*Follow same assembly steps in case of Circum frame



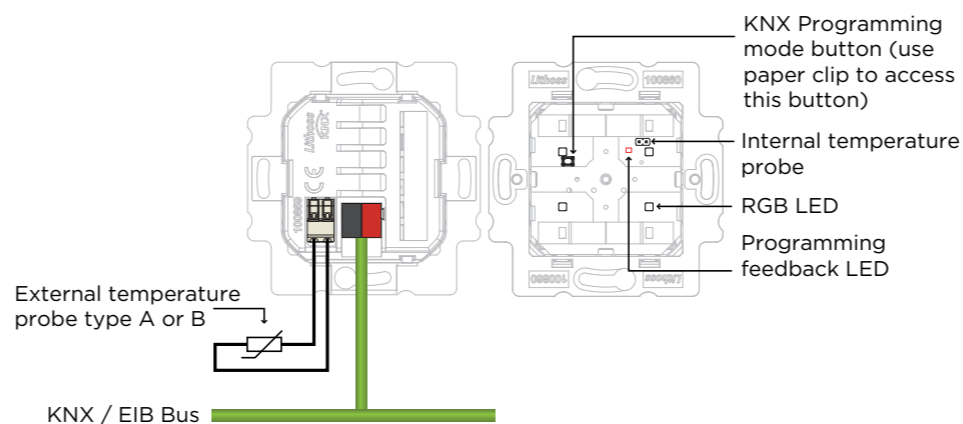
WIRES 16 (AWG) - 1,5mm²

3 PLACE COVERPLATE INTO FRAME



Gebruik steeds de Lithoss tool of paperdip voor het verwijderen van de afdekplaat.
Always use the Lithoss push pin or paper dip for the removal of the cover plate.
Verwenden Sie immer den Lithoss Push-Pin oder Büroklammer für das Entfernen der Deckplatte.
Utilisez toujours le Lithoss 'push pin' ou trombone pour l'écartement de la plaque de finition.

Product overview



Temperature probes

One internal probe is pre-installed on board.
Optionally 1 external probe can be installed with specs:

- NTC temperature probe.
- Type A (from -20°C to +100°C).
- Type B (from -50°C to +60°C).
- Max. length of Connecting Cable: ≤ 10 m (twisted cable).
- Via Poke-in connector.

Download links

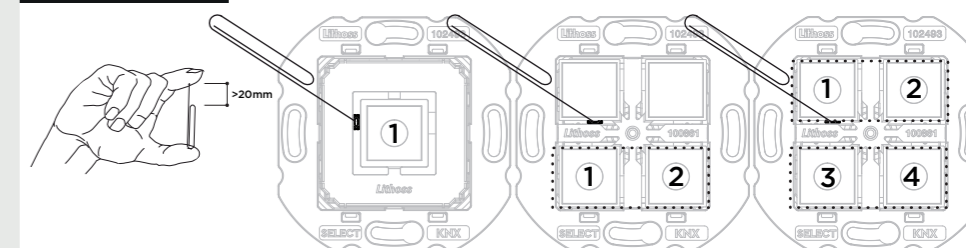
KNX parameter handbook:
https://www.lithoss.be/images/uploads/pdf/Lithoss_Sx_PARAMETER_HANDBOOK_2022.PDF

ETS file 1 button:
https://www.lithoss.be/images/uploads/pdf/Lithoss_S1_2022.zip

ETS file 2 buttons:
https://www.lithoss.be/images/uploads/pdf/Lithoss_S2_2022.zip

ETS file 4 buttons:
https://www.lithoss.be/images/uploads/pdf/Lithoss_S4_2022.zip

Button definition



In parameter file:
[1] Button Upper Left, [2] Button Upper Right, [3] Button Lower Left, [4] Button Lower Right

- Digital inputs main functions**
- 1 bit commands: load activation / deactivation commands (ON/OFF/TOGGLE) with short press or with differentiation of long and short press.
 - 1 byte commands (unsigned 0-255 or HVAC commands or value % commands).
 - Sending of long action telegrams on the same address of short action or on a different group address.
 - Cyclic sending.
 - Sequences (3 commands mixing 1bit/1byte objects) with different group addresses.
 - Edges for 1 bit / 1 Byte / sequences.
 - Dimmer management (with single or double push-button).
 - Blind / Roller Shutter management (with single or double push-button).
 - Scene management.
 - RGB LED color per button (orientation light, feedback activation by button or ext. input object).

- Analog inputs (as temperature sensor) main functions**
- Temperature sensor calibration.
 - Temperature cyclical sending.
 - 2 different temperature thresholds to trigger 1 bit telegrams alarm/warning.
 - Enable / disable of alarm/warnings via 1 bit object.

- Analog inputs (as thermostat) main functions**
- Temperature sensor calibration.
 - Different control algorithms: 2 point on/off; PWM; Continuous Control / Fan Coil Control.
 - Different setting modes: via HVAC automatic / via HVAC Manual / via Setpoint.
 - Window contact function.
 - Additional external temperature sensors (optional)

CUSTOMER SERVICE
info@lithoss.com
www.lithoss.com
++32(0)56481598